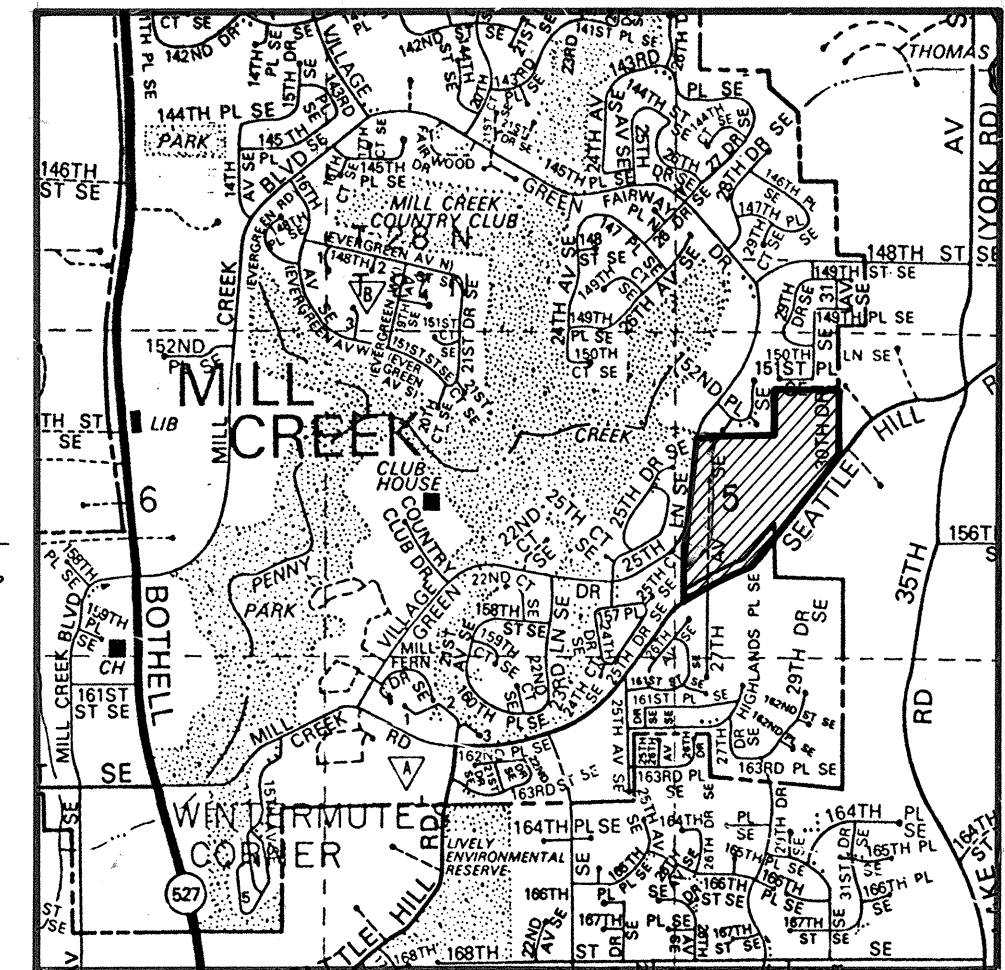
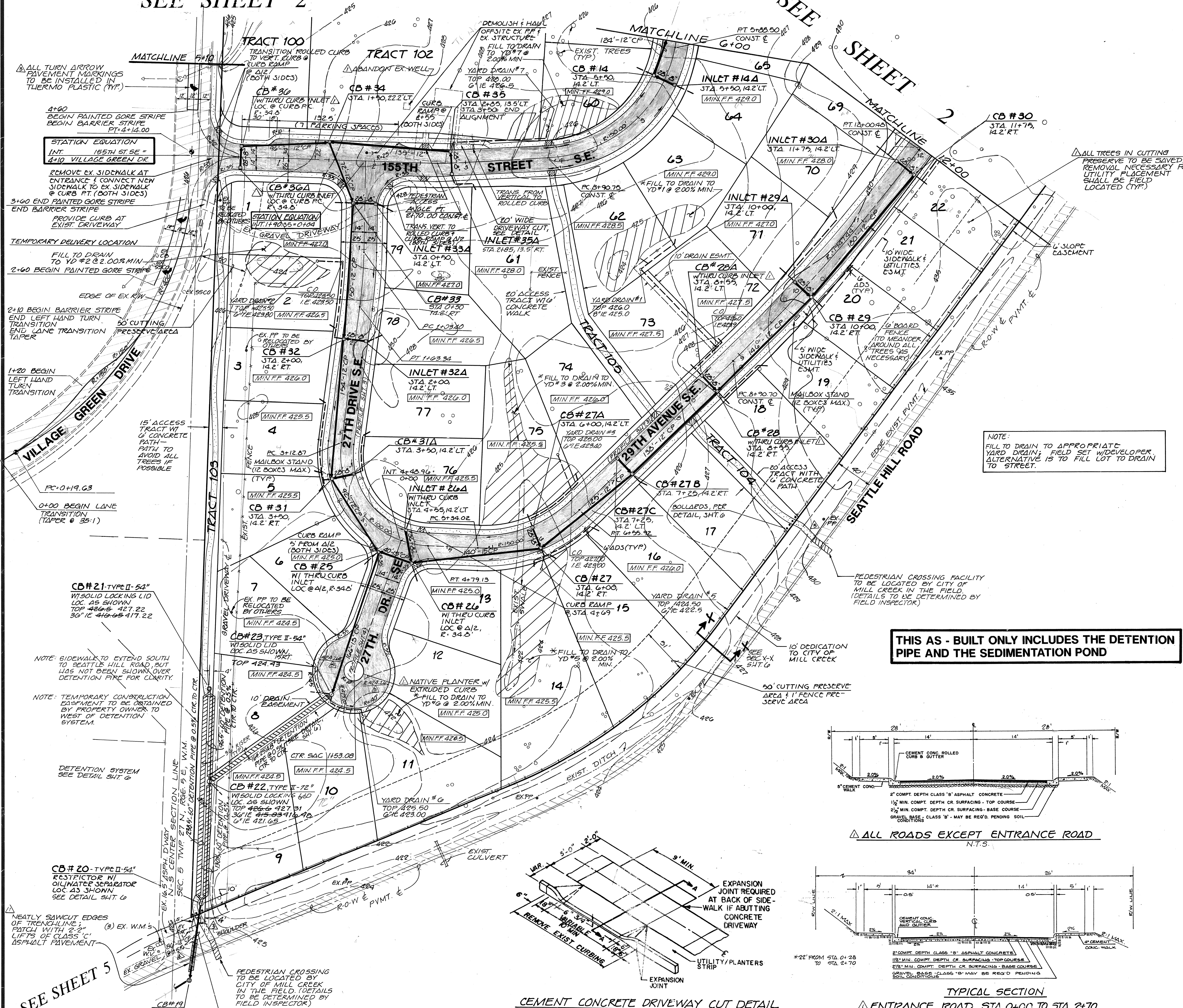
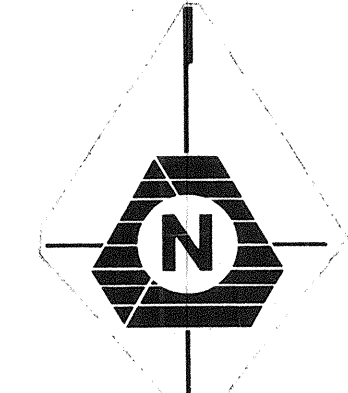


SEE SHEET 2

SEE SHEET 2



VICINITY MAP N.T.S.



CITY OF MILL CREEK  
DEPARTMENT OF PUBLIC WORKS

APPROVED  
 NOT APPROVED  
 REVIEWED  
 AS NOTED

DATE: 12/12/11

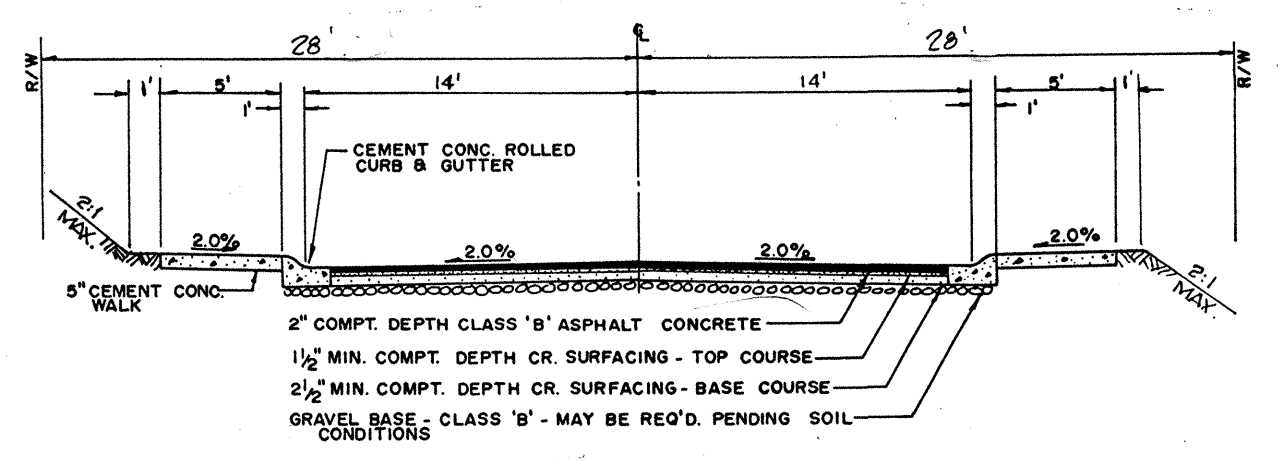
SCALE: 1" = 50'  
 DATUM: U.S.G.S. MEAN SEA LEVEL 1929  
 BENCHMARK: NORTH TOP MON & CASE AT & INTERSECTION VILLAGE GREEN DRIVE & 22ND CT. SE ELEV. 410.30

NOTE: CONTOUR INTERVAL VARIES FROM 1'-5'

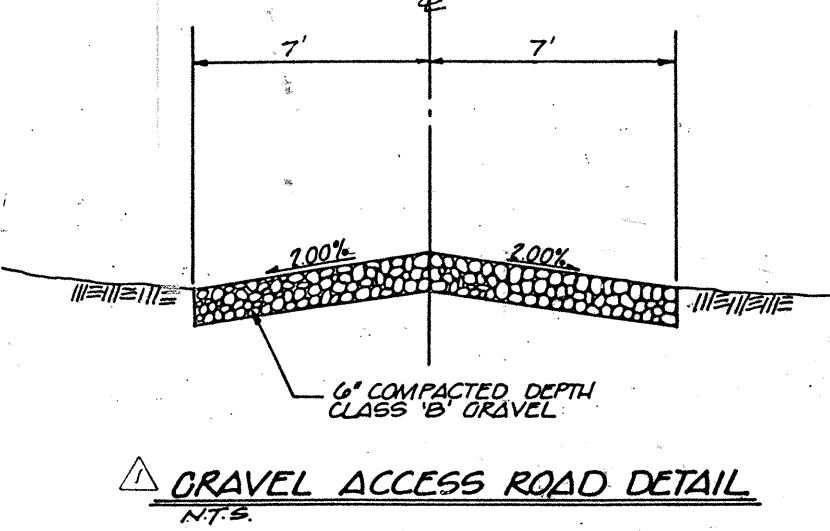
**SHEET INDEX**

1-2	ROAD & STORM DRAINAGE PLANS
3-4	ROAD & STORM DRAINAGE PROFILES
5	OFFSITE STORM DRAINAGE PLAN
6	ROAD & STORM DRAINAGE NOTES & DETAILS
7-8	ALIGNMENT SHEETS

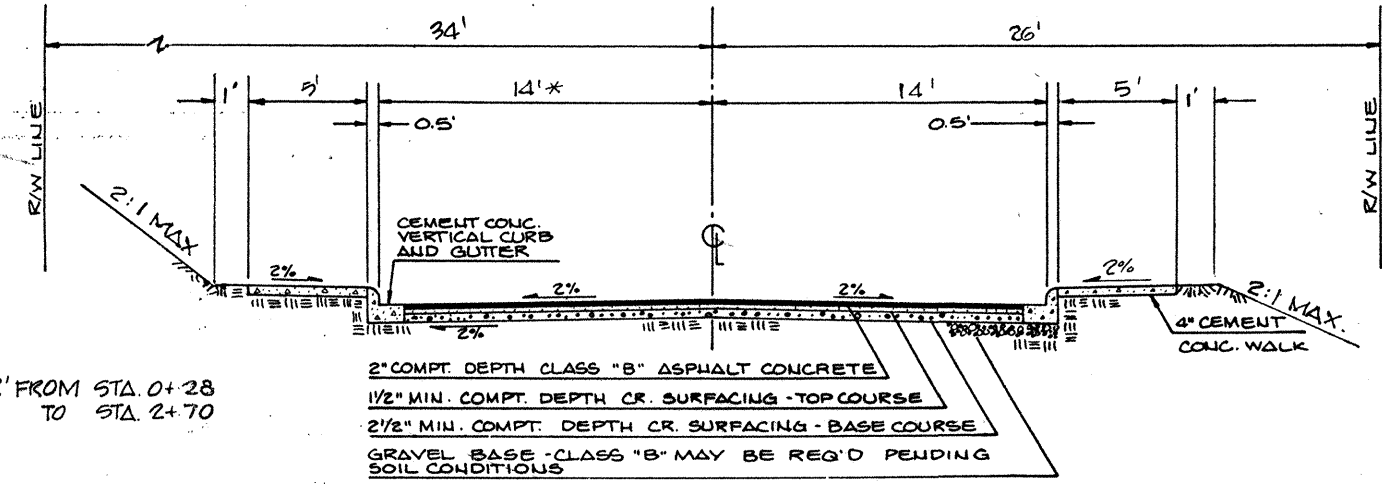
**THIS AS - BUILT ONLY INCLUDES THE DETENTION PIPE AND THE SEDIMENTATION POND**



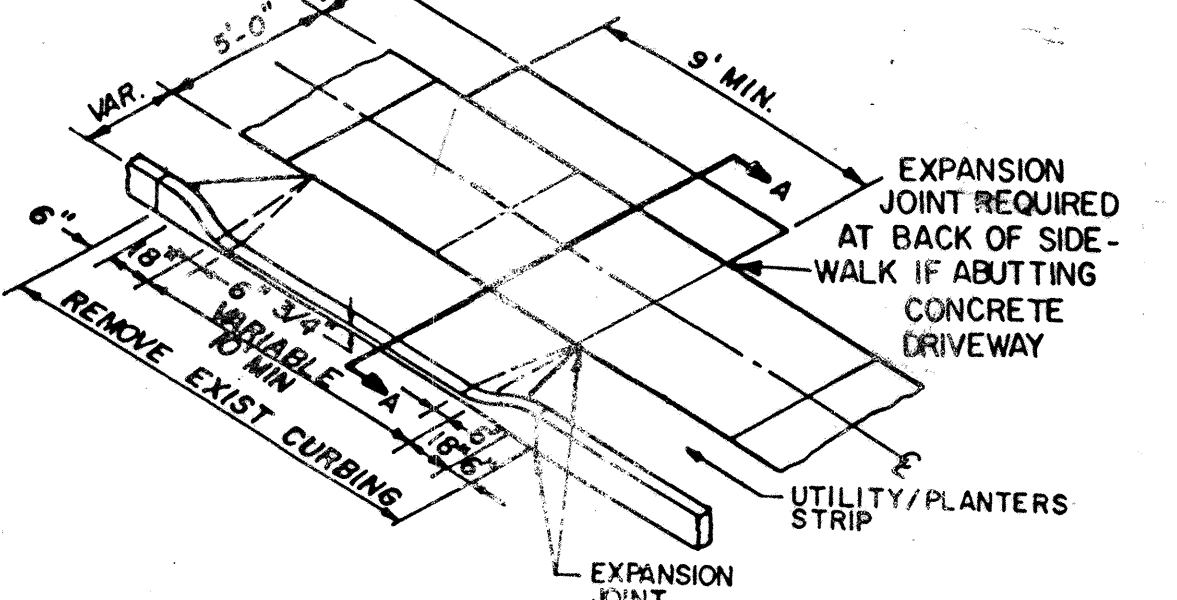
ALL ROADS EXCEPT ENTRANCE ROAD N.T.S.



GRAVEL ACCESS ROAD DETAIL N.T.S.



TYPICAL SECTION ENTRANCE ROAD STA. 0+00 TO STA. 2+70 N.T.S.



CEMENT CONCRETE DRIVEWAY CUT DETAIL NOT TO SCALE

NOTES:

- ALL STORM DRAINAGE PIPE TO BE ALUMINUM CMP UNLESS OTHERWISE SPECIFIED.
- ALL CATCH BASINS TO BE TYPE I UNLESS OTHERWISE INDICATE.
- ALL CATCH BASIN GRATES TO BE MARKED "DUMP NO WASTE--DRAINS TO STREAM".
- ALL CATCH BASINS TO HAVE VANED GRATES EXCEPT THROUGH-CURB INLETS WHICH WILL HAVE STANDARD GRATES.
- ALL PRIVATE PROPERTY DRAINAGE SHALL BE TIED INTO THE PUBLIC SYSTEM

REVISIONS:

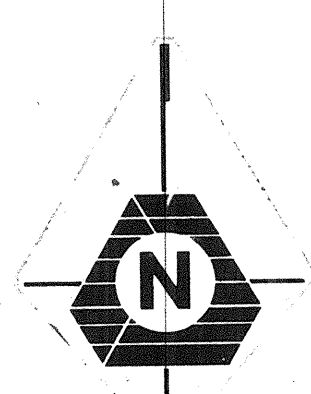
NO.	DATE	BY	DESCRIPTION
1	12/12/11	CO/M/C	REVISED PER CITY
2	12/12/11	CO/M/C	REVISED PER CITY
3	12/12/11	CO/M/C	REVISED PER CITY
4	12/12/11	CO/M/C	REVISED PER CITY
5	12/12/11	CO/M/C	REVISED PER CITY
6	12/12/11	CO/M/C	REVISED PER CITY
7	12/12/11	CO/M/C	REVISED PER CITY
8	12/12/11	CO/M/C	REVISED PER CITY
9	12/12/11	CO/M/C	REVISED PER CITY
10	12/12/11	CO/M/C	REVISED PER CITY
11	12/12/11	CO/M/C	REVISED PER CITY
12	12/12/11	CO/M/C	REVISED PER CITY
13	12/12/11	CO/M/C	REVISED PER CITY
14	12/12/11	CO/M/C	REVISED PER CITY
15	12/12/11	CO/M/C	REVISED PER CITY
16	12/12/11	CO/M/C	REVISED PER CITY
17	12/12/11	CO/M/C	REVISED PER CITY
18	12/12/11	CO/M/C	REVISED PER CITY
19	12/12/11	CO/M/C	REVISED PER CITY
20	12/12/11	CO/M/C	REVISED PER CITY
21	12/12/11	CO/M/C	REVISED PER CITY
22	12/12/11	CO/M/C	REVISED PER CITY
23	12/12/11	CO/M/C	REVISED PER CITY
24	12/12/11	CO/M/C	REVISED PER CITY
25	12/12/11	CO/M/C	REVISED PER CITY
26	12/12/11	CO/M/C	REVISED PER CITY
27	12/12/11	CO/M/C	REVISED PER CITY
28	12/12/11	CO/M/C	REVISED PER CITY
29	12/12/11	CO/M/C	REVISED PER CITY
30	12/12/11	CO/M/C	REVISED PER CITY
31	12/12/11	CO/M/C	REVISED PER CITY
32	12/12/11	CO/M/C	REVISED PER CITY
33	12/12/11	CO/M/C	REVISED PER CITY
34	12/12/11	CO/M/C	REVISED PER CITY
35	12/12/11	CO/M/C	REVISED PER CITY
36	12/12/11	CO/M/C	REVISED PER CITY
37	12/12/11	CO/M/C	REVISED PER CITY
38	12/12/11	CO/M/C	REVISED PER CITY
39	12/12/11	CO/M/C	REVISED PER CITY
40	12/12/11	CO/M/C	REVISED PER CITY
41	12/12/11	CO/M/C	REVISED PER CITY
42	12/12/11	CO/M/C	REVISED PER CITY
43	12/12/11	CO/M/C	REVISED PER CITY
44	12/12/11	CO/M/C	REVISED PER CITY
45	12/12/11	CO/M/C	REVISED PER CITY
46	12/12/11	CO/M/C	REVISED PER CITY
47	12/12/11	CO/M/C	REVISED PER CITY
48	12/12/11	CO/M/C	REVISED PER CITY
49	12/12/11	CO/M/C	REVISED PER CITY
50	12/12/11	CO/M/C	REVISED PER CITY
51	12/12/11	CO/M/C	REVISED PER CITY
52	12/12/11	CO/M/C	REVISED PER CITY
53	12/12/11	CO/M/C	REVISED PER CITY
54	12/12/11	CO/M/C	REVISED PER CITY
55	12/12/11	CO/M/C	REVISED PER CITY
56	12/12/11	CO/M/C	REVISED PER CITY
57	12/12/11	CO/M/C	REVISED PER CITY
58	12/12/11	CO/M/C	REVISED PER CITY
59	12/12/11	CO/M/C	REVISED PER CITY
60	12/12/11	CO/M/C	REVISED PER CITY
61	12/12/11	CO/M/C	REVISED PER CITY
62	12/12/11	CO/M/C	REVISED PER CITY
63	12/12/11	CO/M/C	REVISED PER CITY
64	12/12/11	CO/M/C	REVISED PER CITY
65	12/12/11	CO/M/C	REVISED PER CITY
66	12/12/11	CO/M/C	REVISED PER CITY
67	12/12/11	CO/M/C	REVISED PER CITY
68	12/12/11	CO/M/C	REVISED PER CITY
69	12/12/11	CO/M/C	REVISED PER CITY
70	12/12/11	CO/M/C	REVISED PER CITY
71	12/12/11	CO/M/C	REVISED PER CITY
72	12/12/11	CO/M/C	REVISED PER CITY
73	12/12/11	CO/M/C	REVISED PER CITY
74	12/12/11	CO/M/C	REVISED PER CITY
75	12/12/11	CO/M/C	REVISED PER CITY
76	12/12/11	CO/M/C	REVISED PER CITY
77	12/12/11	CO/M/C	REVISED PER CITY
78	12/12/11	CO/M/C	REVISED PER CITY
79	12/12/11	CO/M/C	REVISED PER CITY
80	12/12/11	CO/M/C	REVISED PER CITY
81	12/12/11	CO/M/C	REVISED PER CITY
82	12/12/11	CO/M/C	REVISED PER CITY
83	12/12/11	CO/M/C	REVISED PER CITY
84	12/12/11	CO/M/C	REVISED PER CITY
85	12/12/11	CO/M/C	REVISED PER CITY
86	12/12/11	CO/M/C	REVISED PER CITY
87	12/12/11	CO/M/C	REVISED PER CITY
88	12/12/11	CO/M/C	REVISED PER CITY
89	12/12/11	CO/M/C	REVISED PER CITY
90	12/12/11	CO/M/C	REVISED PER CITY
91	12/12/11	CO/M/C	REVISED PER CITY
92	12/12/11	CO/M/C	REVISED PER CITY
93	12/12/11	CO/M/C	REVISED PER CITY
94	12/12/11	CO/M/C	REVISED PER CITY
95	12/12/11	CO/M/C	REVISED PER CITY
96	12/12/11	CO/M/C	REVISED PER CITY
97	12/12/11	CO/M/C	REVISED PER CITY
98	12/12/11	CO/M/C	REVISED PER CITY
99	12/12/11	CO/M/C	REVISED PER CITY
100	12/12/11	CO/M/C	REVISED PER CITY

DESIGNED: H.H. PE. IJDP  
 DRAWN: K. NICKELS / JDR  
 CHECKED: DATE: LARRY CALVIN  
 PROJECT MANAGER: DATE: 12/12/11

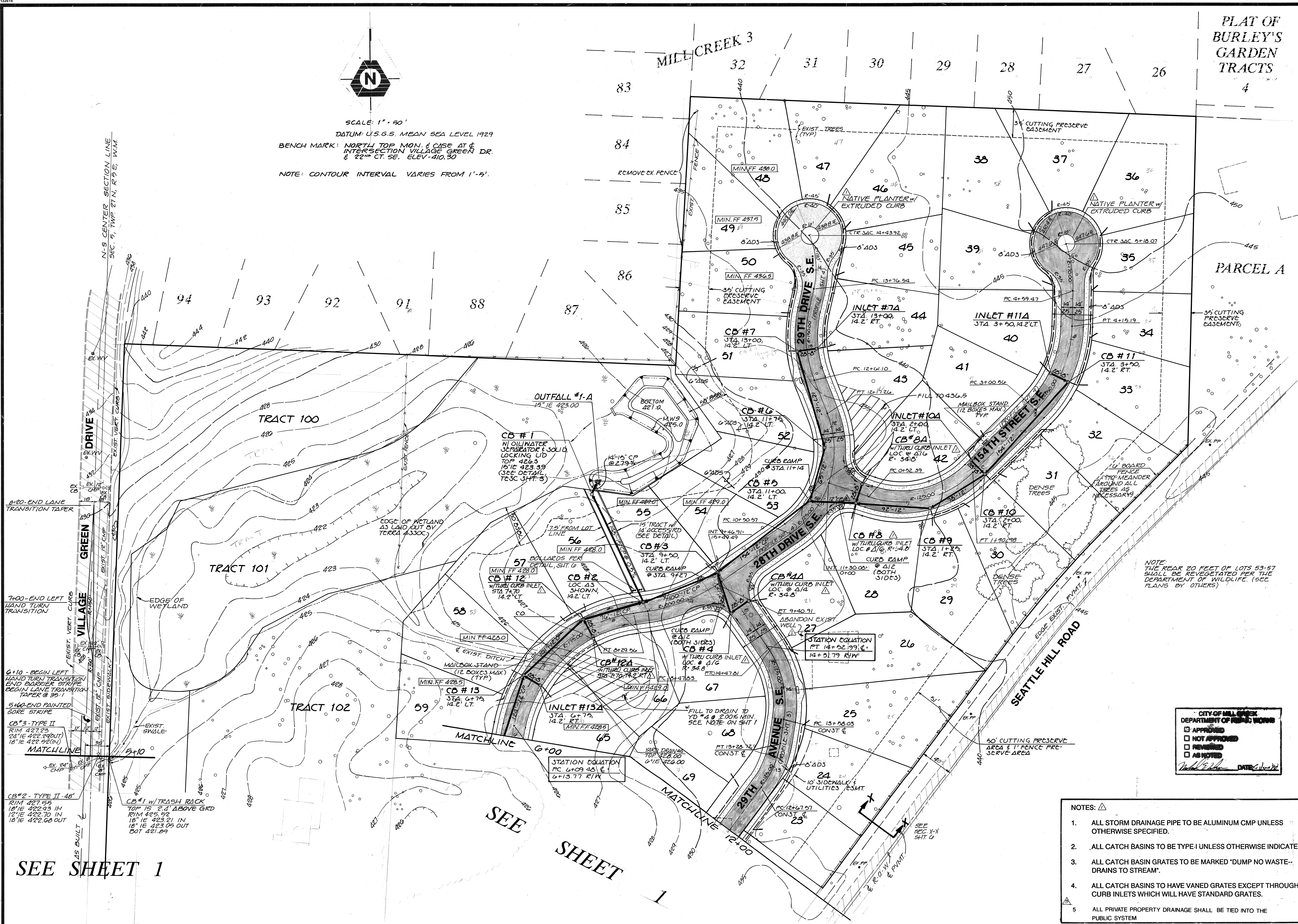
1 SHEET OF 8  
 JOB NUMBER: 88-237

AS - BUILT  
 ROAD AND STORM DRAINAGE PLAN  
 HAMLIN PARK  
 CITY OF MILL CREEK, WASHINGTON

PLAT OF BURLEY'S GARDEN TRACTS



SCALE: 1" = 50'  
DATUM: U.S.G.S. MEAN SEA LEVEL 1929  
BENCH MARK: NORTH TOP MON. & CASE AT INTERSECTION VILLAGE GREEN DR. & 22ND CT. SE. ELEV. 410.30  
NOTE: CONTOUR INTERVAL VARIES FROM 1'-5'.



CITY OF MILL CREEK  
DEPARTMENT OF PUBLIC WORKS  
 APPROVED  
 NOT APPROVED  
 REVISION  
 AS NOTED  
DATE: 12/15/2011

- NOTES:  $\Delta$
- 1. ALL STORM DRAINAGE PIPE TO BE ALUMINUM CMP UNLESS OTHERWISE SPECIFIED.
  - 2. ALL CATCH BASINS TO BE TYPE I UNLESS OTHERWISE INDICATE.
  - 3. ALL CATCH BASIN GRATES TO BE MARKED "DUMP NO WASTE--DRAINS TO STREAM".
  - 4. ALL CATCH BASINS TO HAVE VANED GRATES EXCEPT THROUGH-CURB INLETS WHICH WILL HAVE STANDARD GRATES.
  - 5. ALL PRIVATE PROPERTY DRAINAGE SHALL BE TIED INTO THE PUBLIC SYSTEM

SEE SHEET 1

SEE SHEET 1

BY OK: [Signatures]

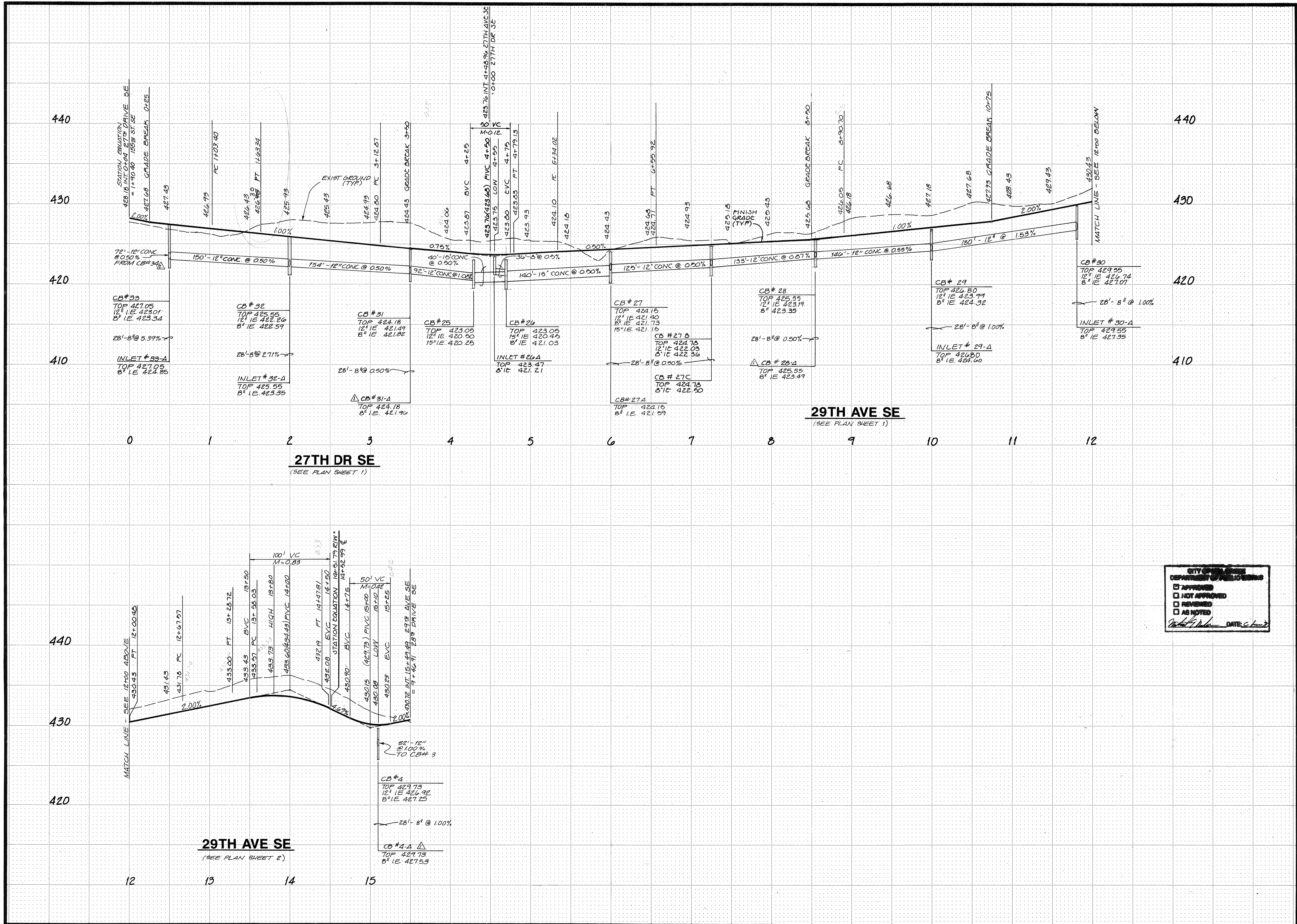
REVISIONS: [Table with columns for NO, DATE, REVISIONS]

PROJECT: ROAD AND STORM DRAINAGE PLAN  
HAMLIN PARK  
CITY OF MILL CREEK, WASHINGTON

DESIGNED: H.H. [Signature]  
DRAWN: K. NICKELSKI/JDF  
CHECKED: [Signature]  
DATE: [Date]  
PROJECT MANAGER: LARRY CALVIN

SHEET 2 OF 8  
JOB NUMBER 88-237

11415 NE 128th Street • Kirkland, WA 98034 • (206) 821-8448 • (206) 821-3491 FAX



CITY OF MILL CREEK  
DEPARTMENT OF PUBLIC WORKS

APPROVED  
 NOT APPROVED  
 REVIEWED  
 AS NOTED

*[Signature]* DATE: 11-27-23

NO.	DATE	REVISIONS	BY
1	11-27-23	REV. PER C.O.M.C.	MM
2	11-27-23	REV. PER C.O.M.C.	MM
3	11-27-23	REV. PER C.O.M.C.	MM
4	11-27-23	REV. PER C.O.M.C.	MM

Project Management  
Civil Engineering  
Land Surveying  
Land Use Planning  
Environmental Analysis

**TRIAD ASSOCIATES**

11415 NE 128th Street • Kirkland, WA 98034 • (206) 821-9448 • (206) 821-3481 FAX

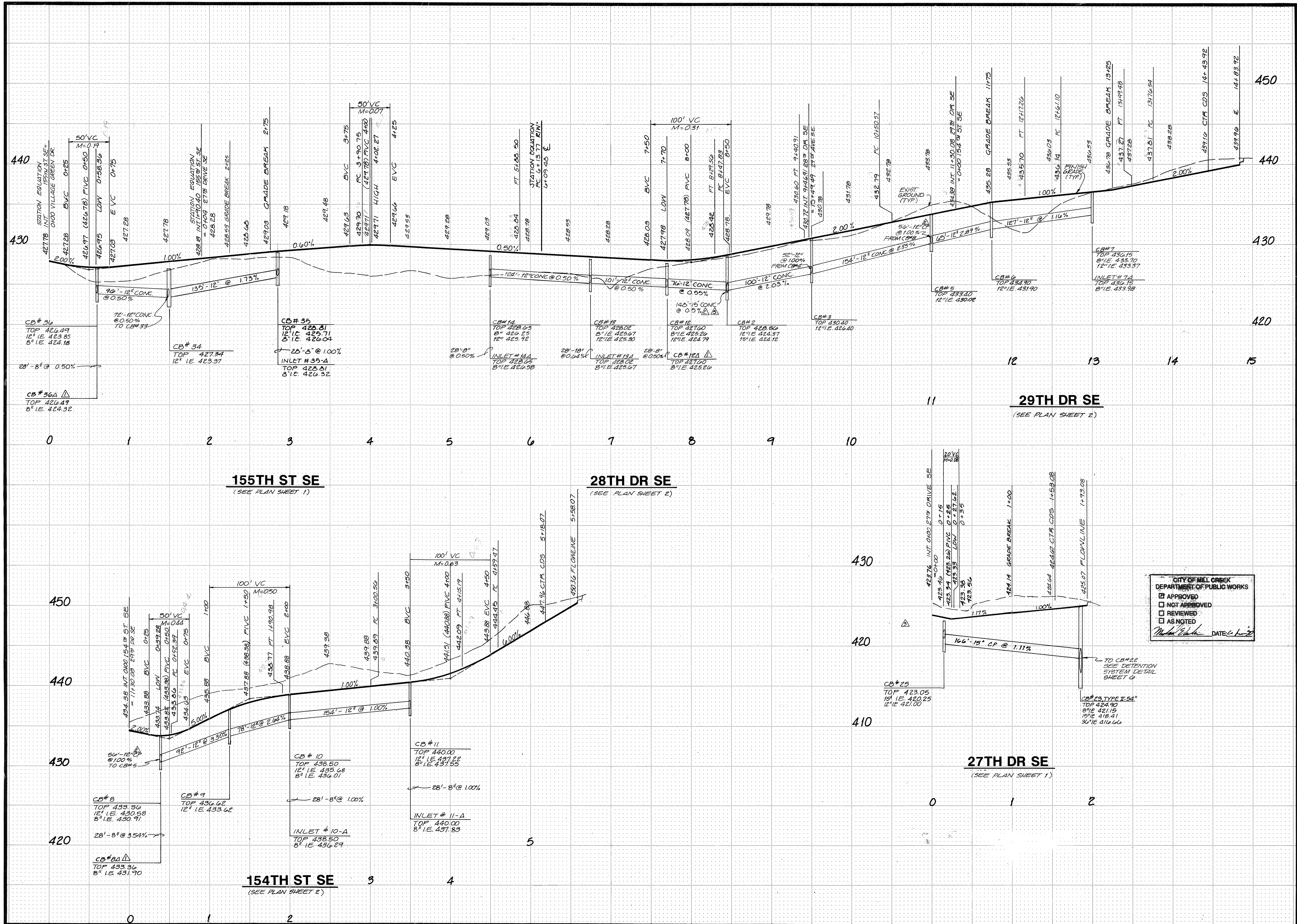
ROAD & STORM DRAINAGE PROFILES

**HAMLIN PARK**

CITY OF MILL CREEK, WASHINGTON

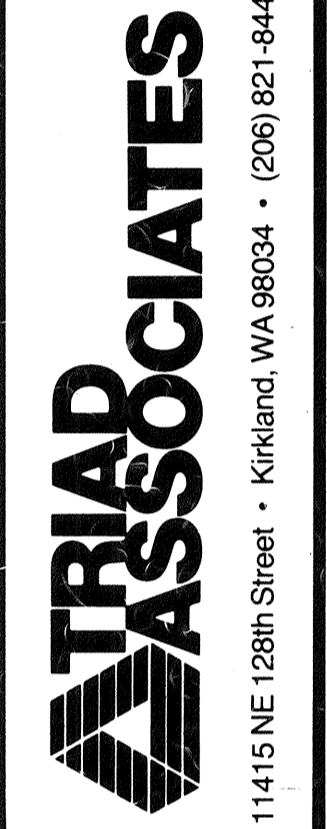
DESIGNED	JJP
DRAWN	AA/LWF
CHECKED	
DATE	LARRY CALVIN
PROJECT MANAGER	

SHEET  
**3** OF **8**  
JOB NUMBER  
**88-237**



NO.	DATE	REVISIONS	BY
1	1/18/08	REV. PER C.D.M.C.	KV
2	1/20/08	REV. PER C.D.M.C.	KV
3	1/20/08	REVISED WITH DR. S.E. 40 GRAD. S	KV
4	1/20/08	1/20/08, REV. LOTS	KV
5	5-6-09	REV. PARK ENTRANCE CAT	JD
6	1/5/10	155TH ST. S.E. PER CITY	JD

Project Management  
Civil Engineering  
Land Surveying  
Land Use Planning  
Environmental Analysis



11415 NE 128th Street • Kirkland, WA 98034 • (206) 821-9448 • (206) 821-3481 FAX

ROAD & STORM DRAINAGE PROFILES

**HAMLIN PARK**

CITY OF MILL CREEK, WASHINGTON

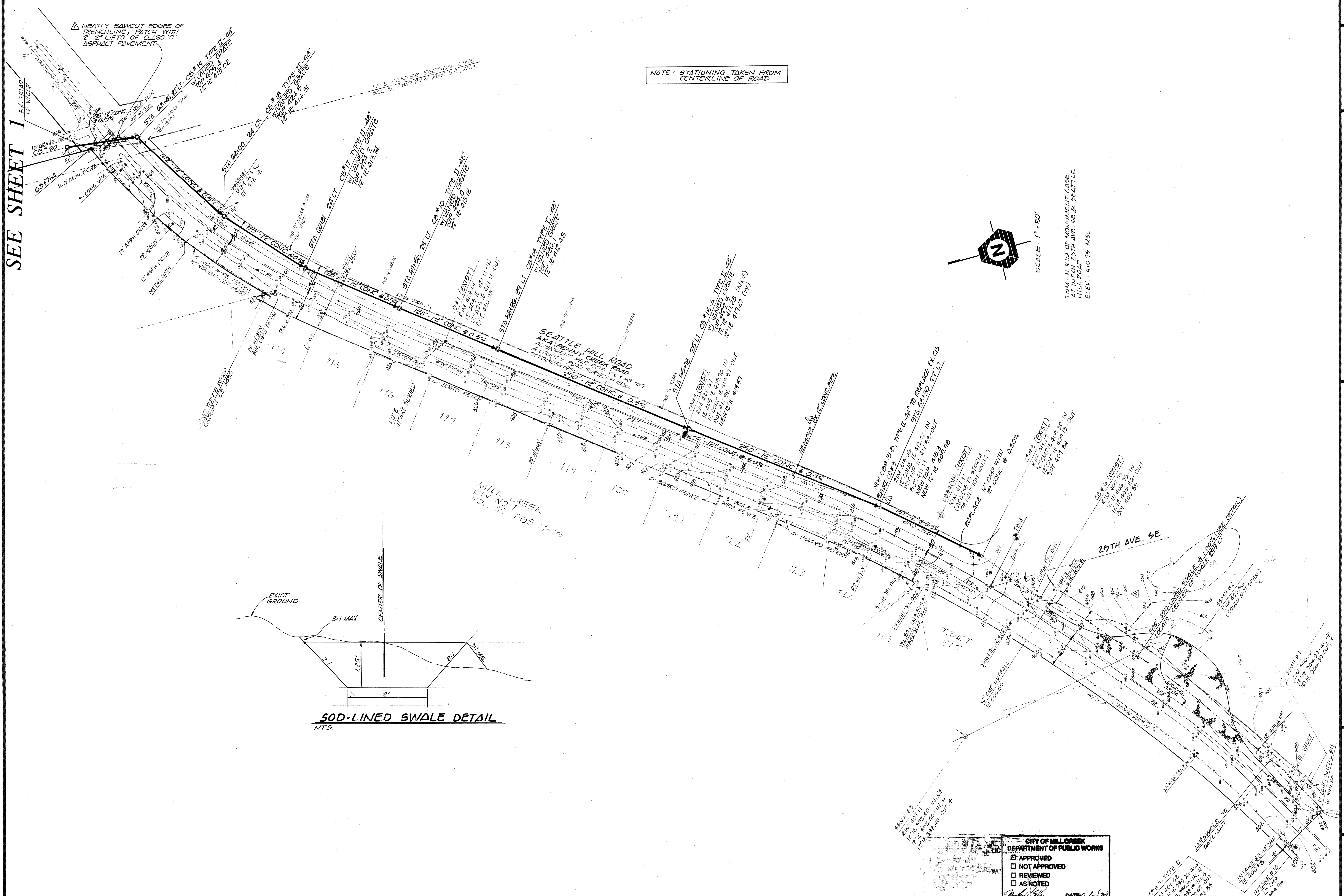
CITY OF MILL CREEK  
DEPARTMENT OF PUBLIC WORKS

APPROVED  
 NOT APPROVED  
 REVIEWED  
 AS NOTED

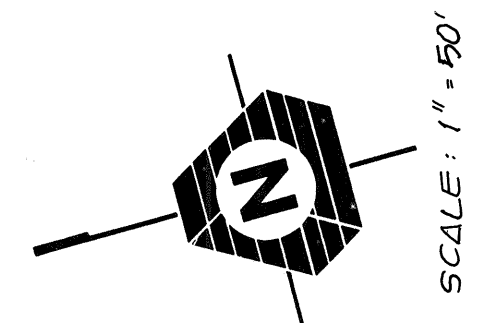
*M. J. [Signature]* DATE: 1/1/22

DESIGNED/JLP	DRAWN/ABL/INE	CHECKED	DATE 3/1/20
PROJECT MANAGER			LARRY CALIXTA
SHEET		4 OF 8	
JOB NUMBER		88-237	

SEE SHEET 1



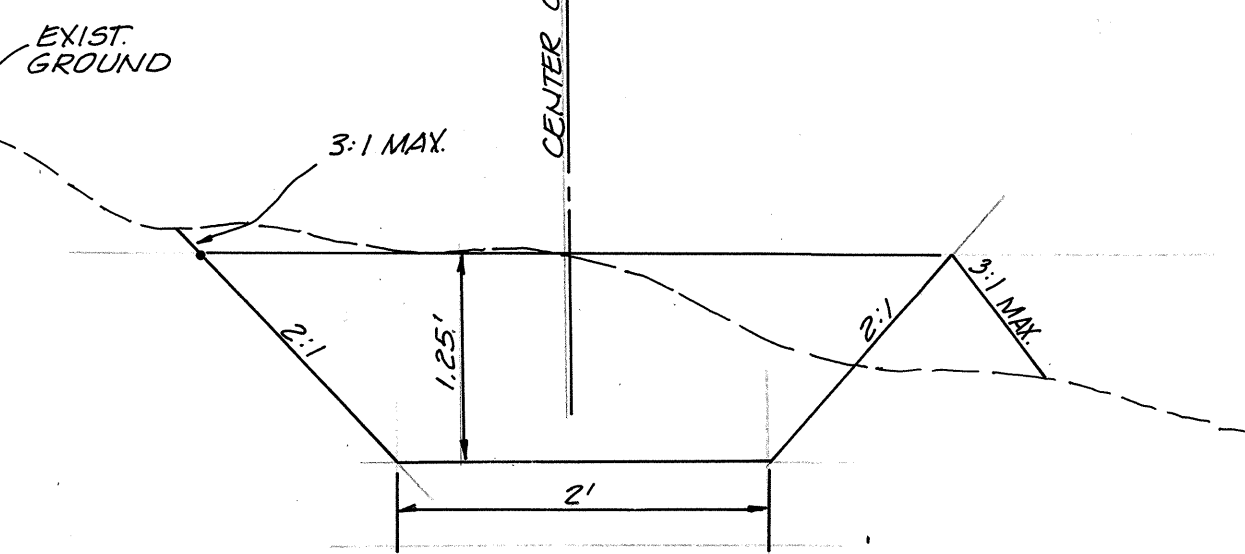
NOTE: STATIONING TAKEN FROM CENTERLINE OF ROAD



SCALE: 1" = 50'

TBM - U/RIM OF MONUMENT CASE  
 HILL ROAD 25TH AVE. SE & SEATTLE  
 ELEV. = 410.75 MSL

SOD-LINED SWALE DETAIL N.T.S.



**CITY OF MILL CREEK**  
 DEPARTMENT OF PUBLIC WORKS

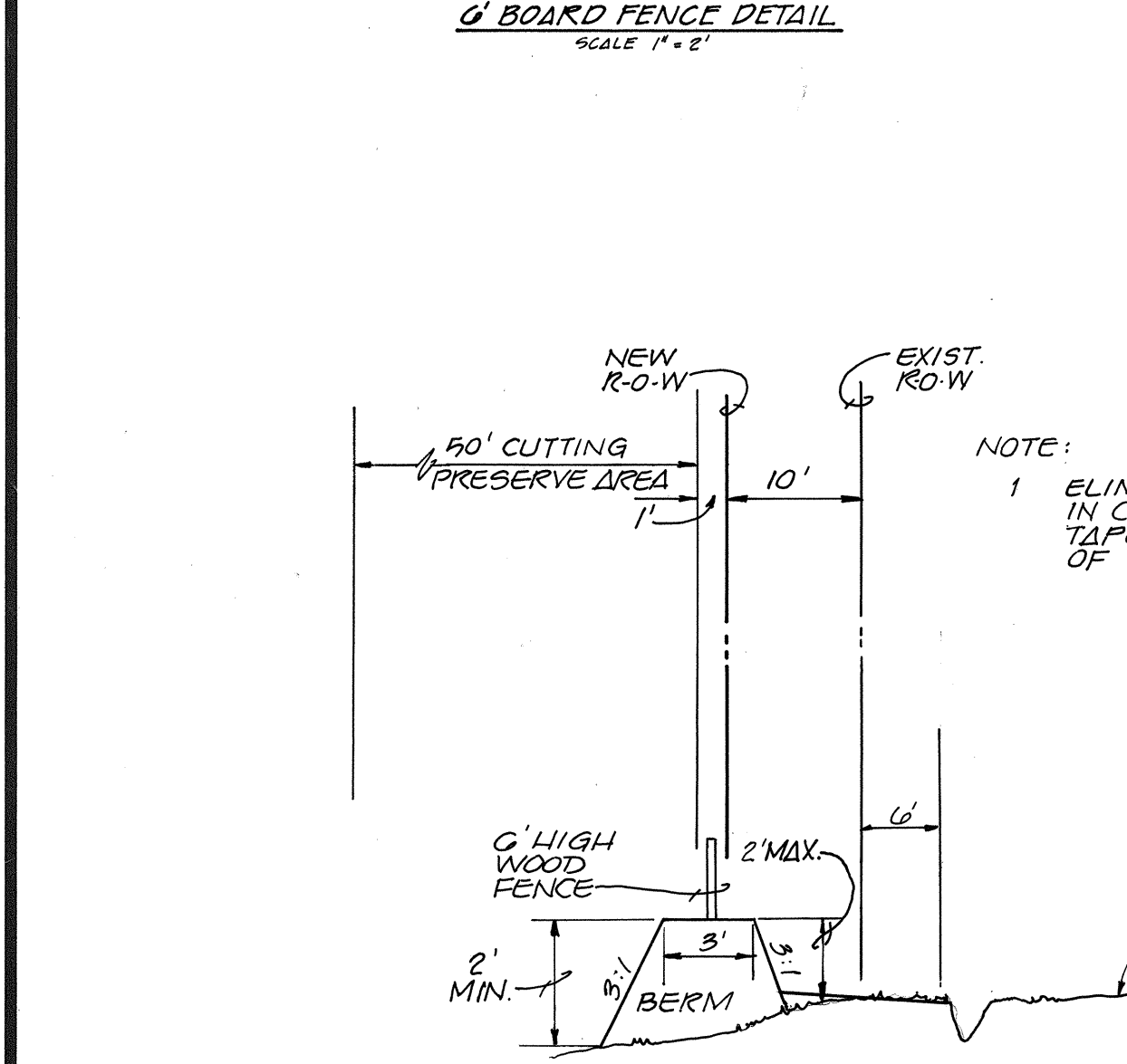
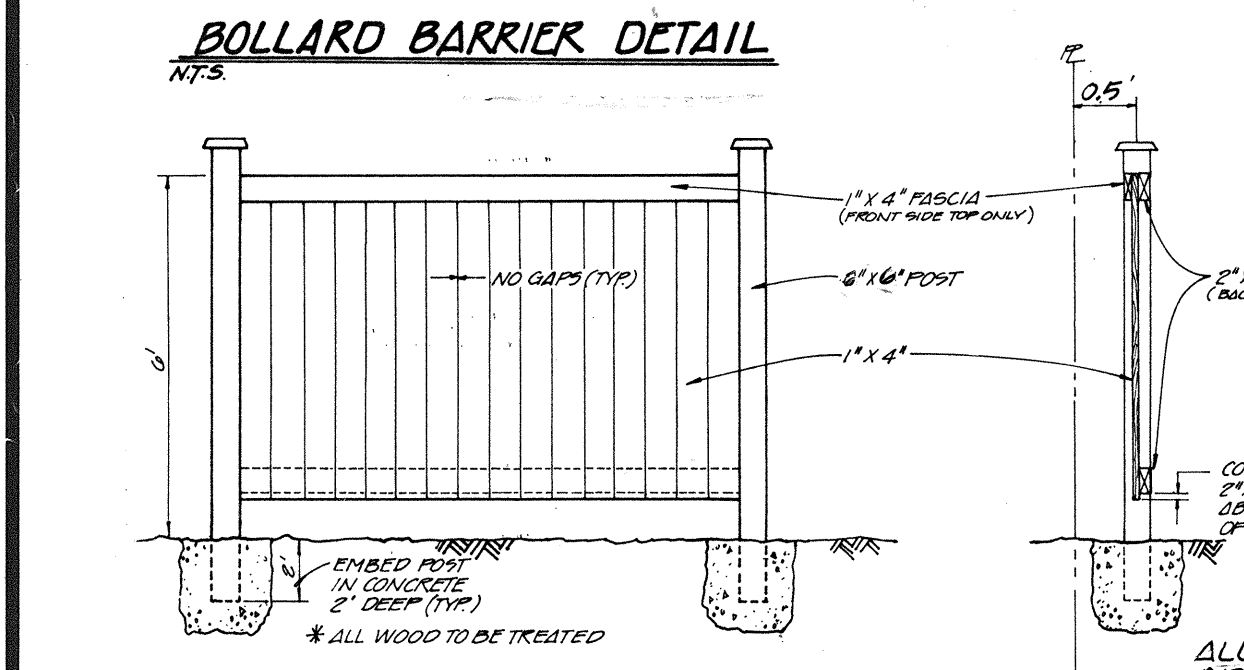
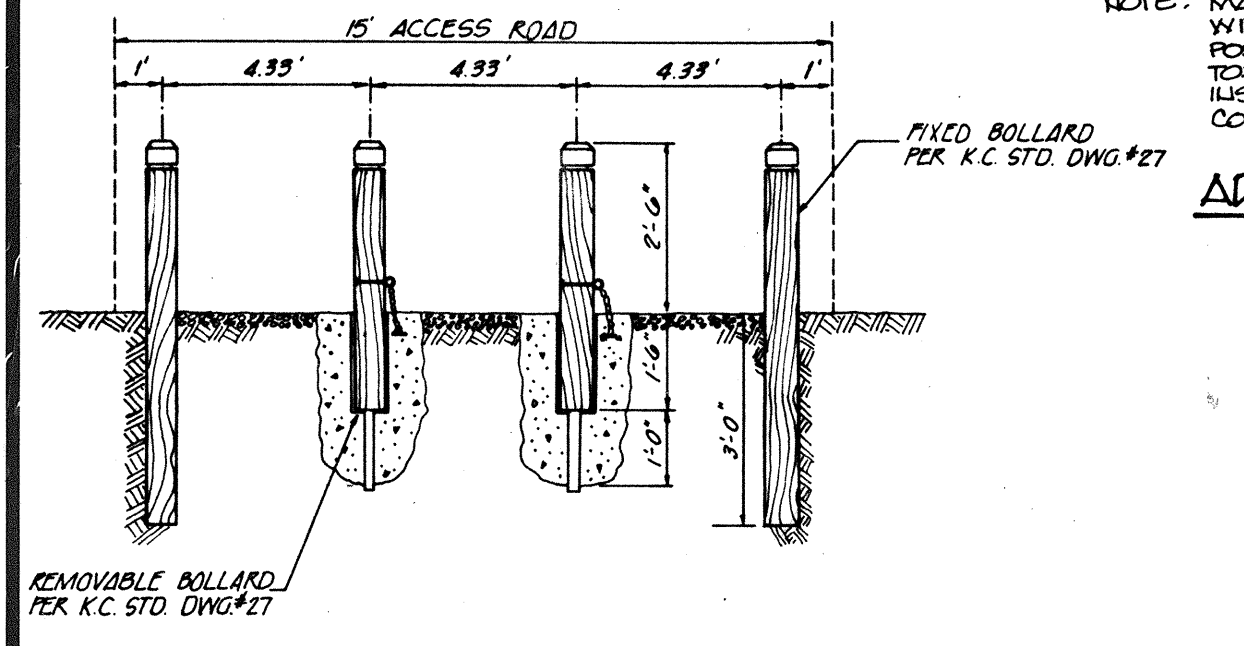
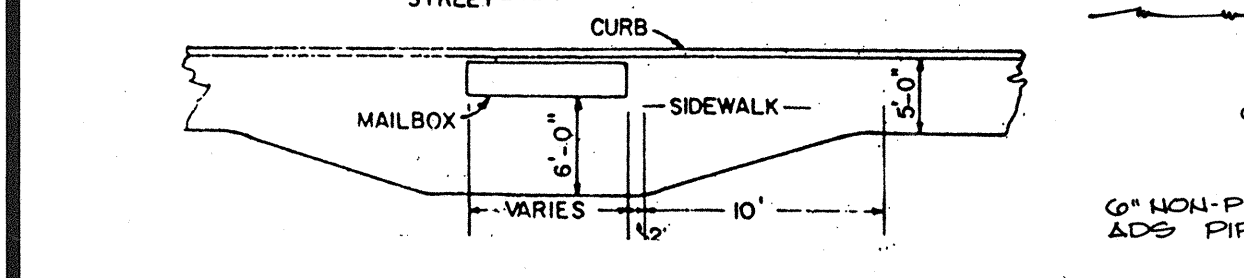
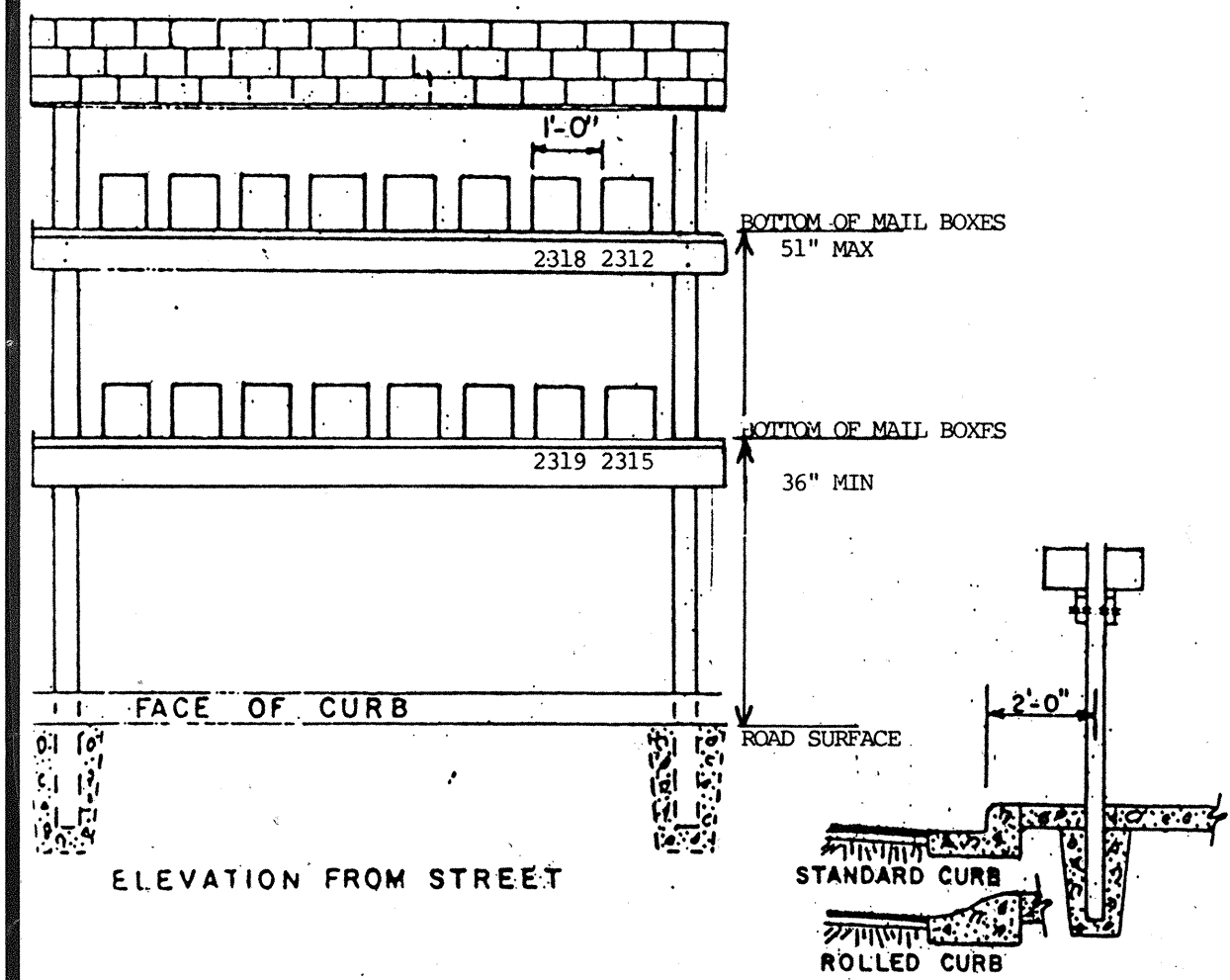
APPROVED  
 NOT APPROVED  
 REVIEWED  
 AS NOTED

DATE: 1-1-20

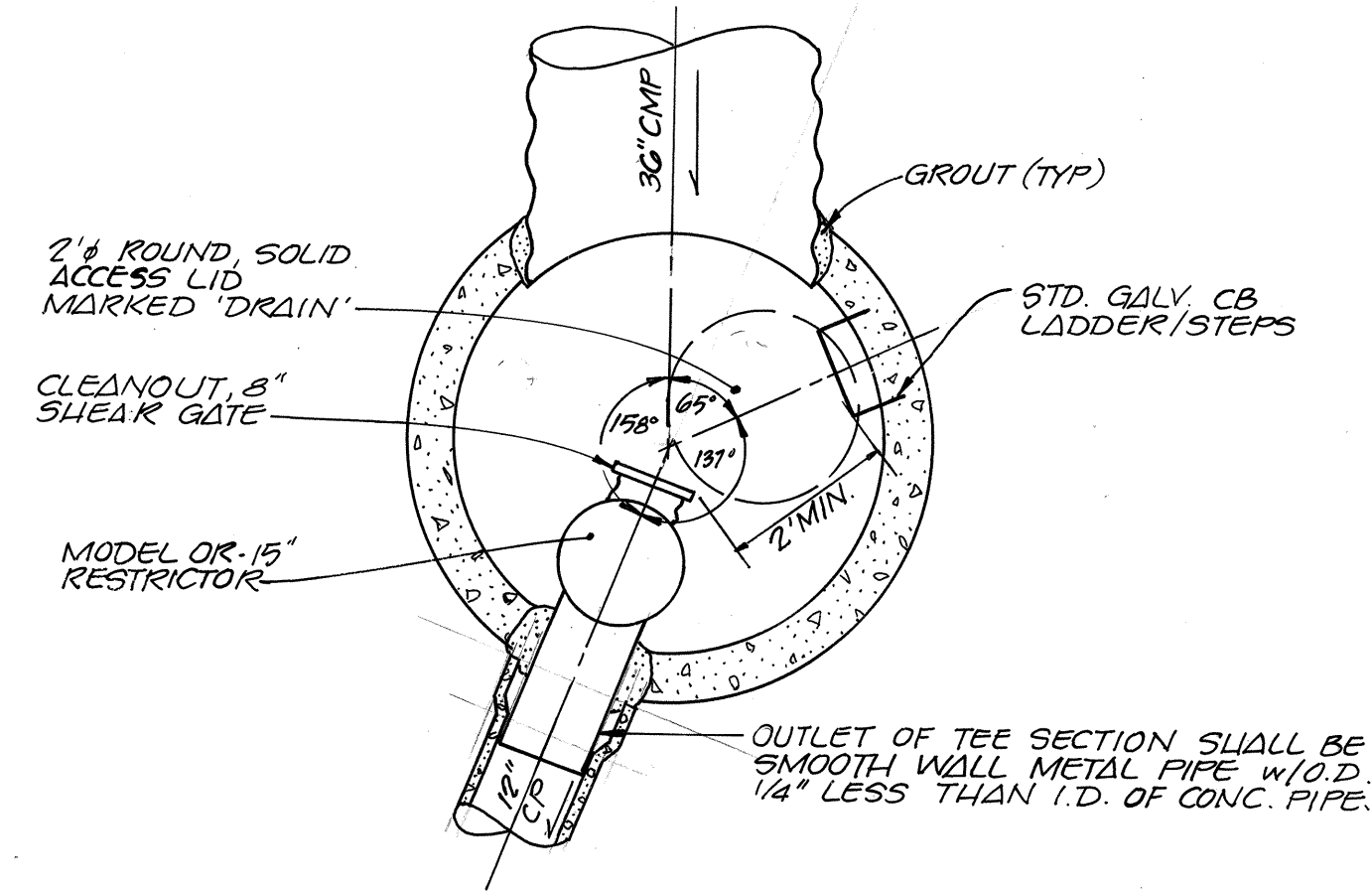
OFFSITE STORM DRAINAGE PLAN  
**HAMLIN PARK**  
 CITY OF MILL CREEK, WASHINGTON

Date: \_\_\_\_\_  
 Designed: JUP  
 Drawn: ACT  
 Checked: LACEY CALVIN  
 Project Manager: \_\_\_\_\_

**MAILBOX STANDARD**

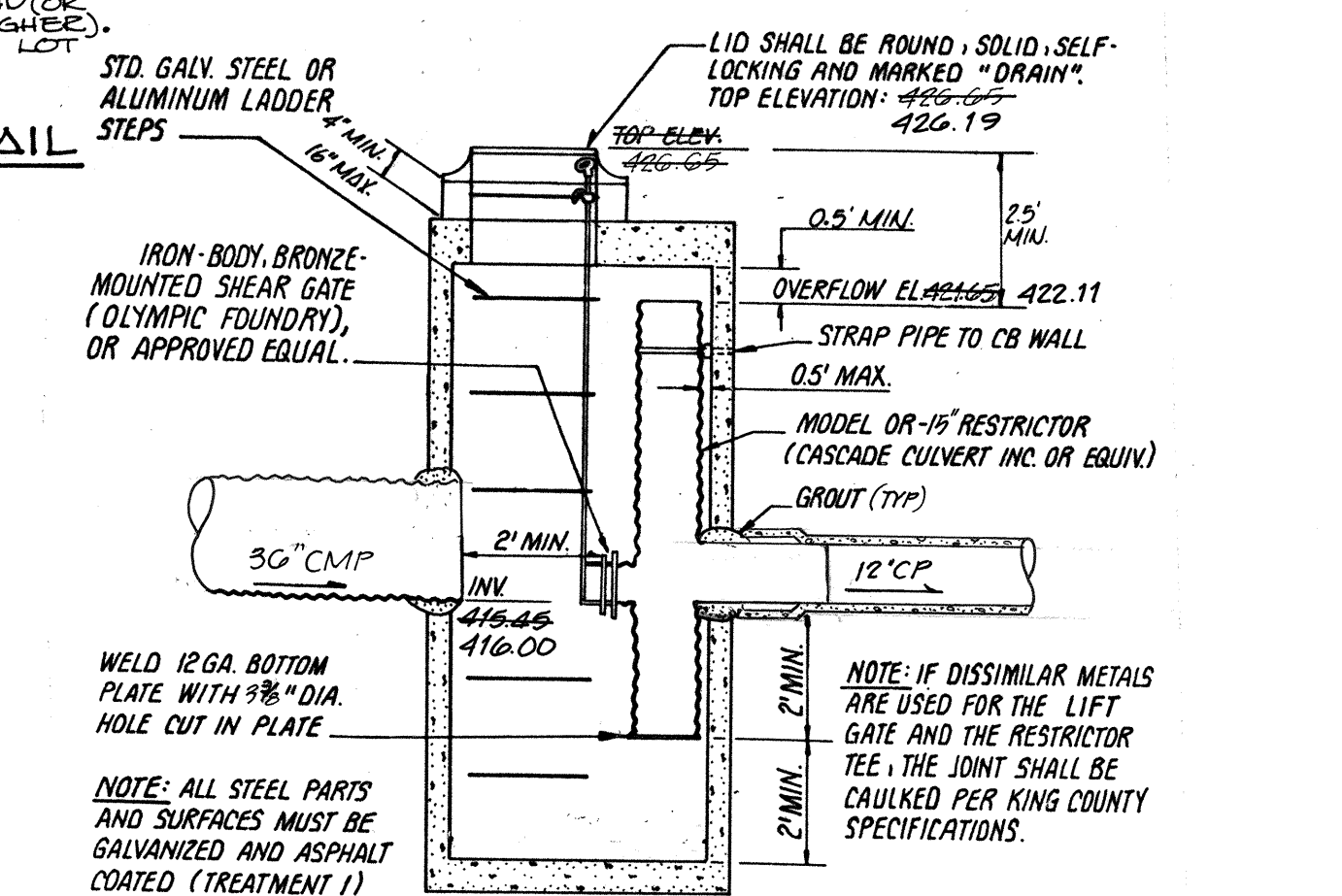


**SECTION X-X**  
N.T.S.

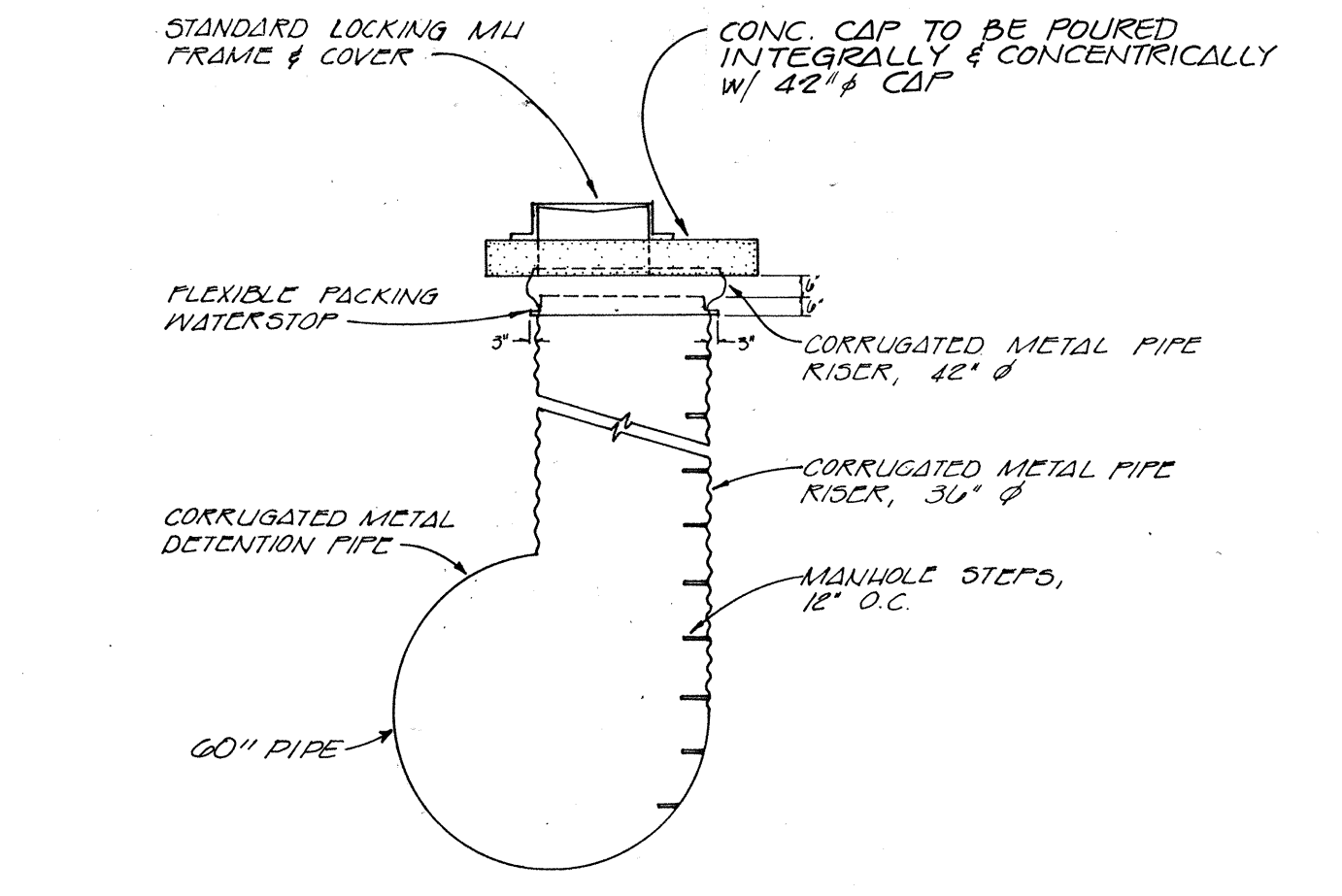


**CB #20, PLAN VIEW**  
SCALE: 1" = 2'

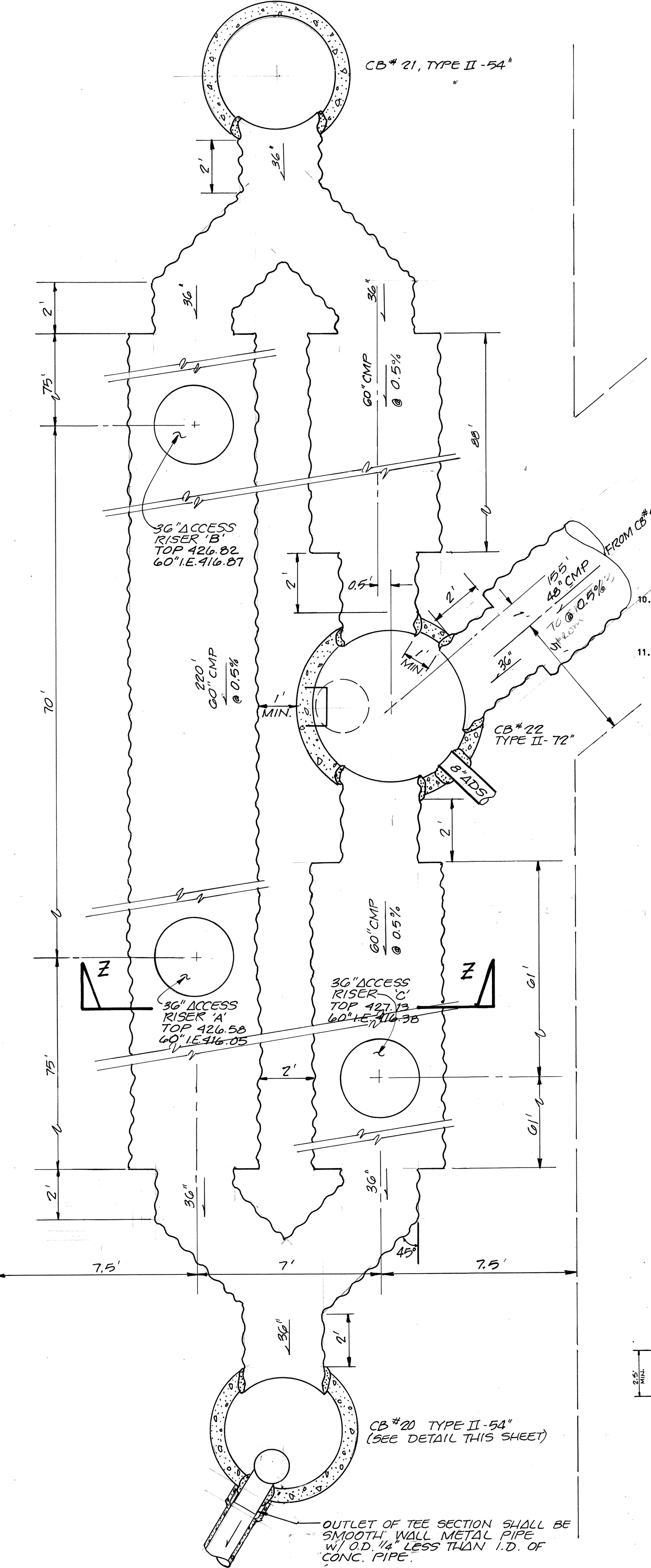
**DETENTION PIPE VOLUME REQUIRED 10,272 FT<sup>3</sup>  
VOLUME PROVIDED 10,859 FT<sup>3</sup>**



**DETAIL - CB #20 TYPE II-54**  
OIL/WATER SEPARATOR AND RESTRICTED ORIFICE  
NO SCALE



**DETENTION PIPE ACCESS RISER**  
N.T.S.

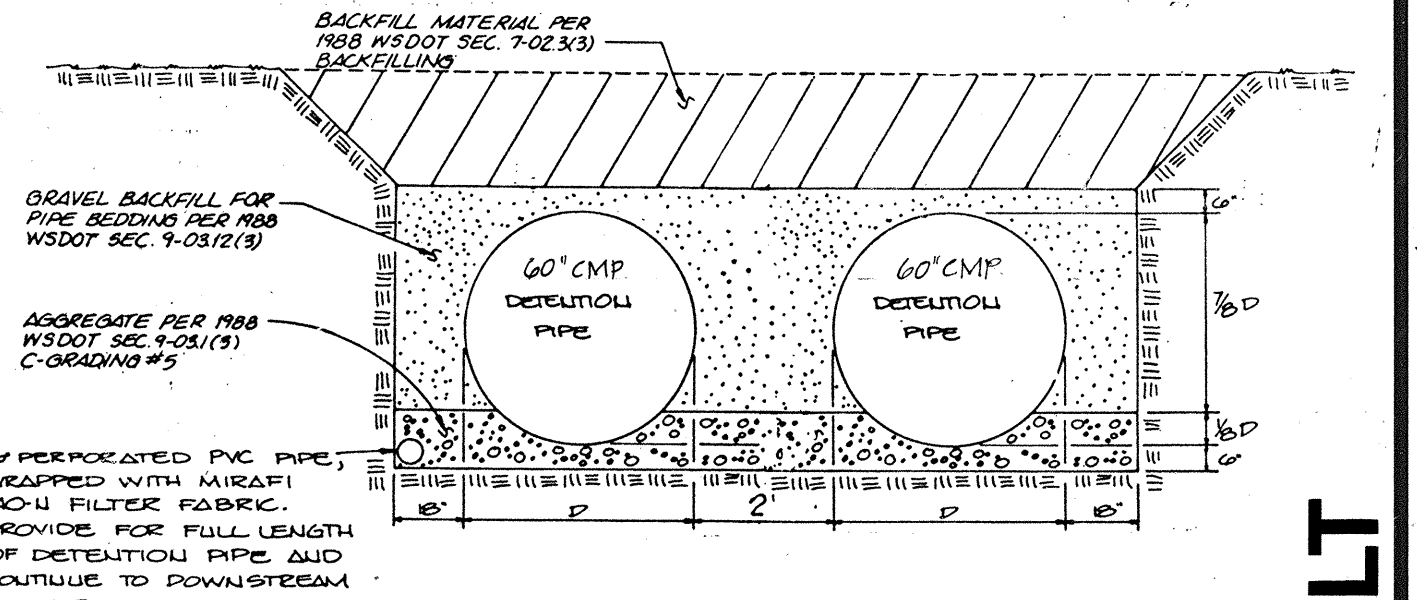


**PLAN VIEW**  
**DETENTION SYSTEM**  
SCALE: 1" = 3'

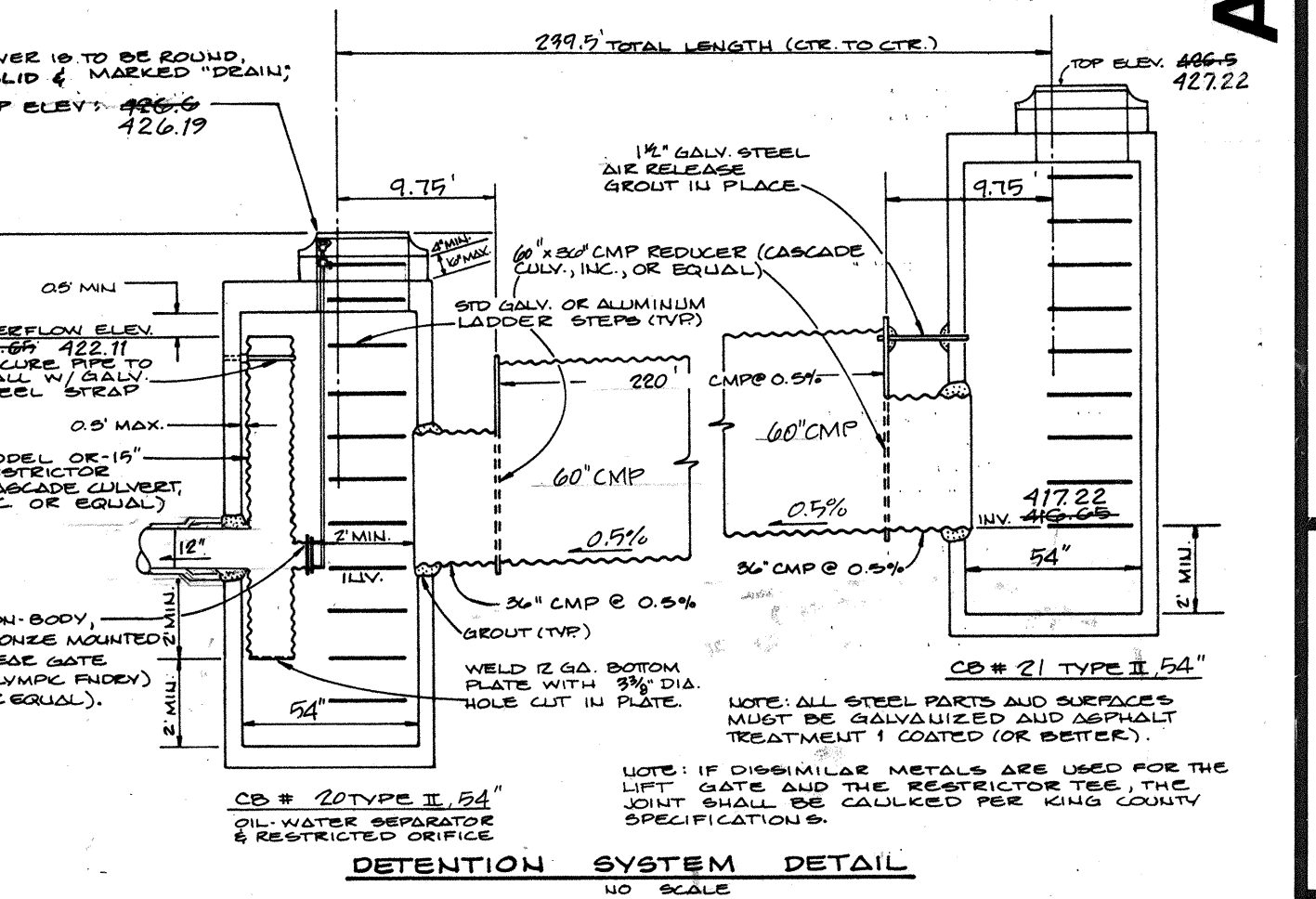
**CITY OF MILL CREEK**  
DEPARTMENT OF PUBLIC WORKS  
 APPROVED  
 NOT APPROVED  
 REVIEWED  
 AS NOTED  
DATE: 12-22

- STORM WATER DRAINAGE PLAN NOTES**
1. ALL WORK AND MATERIALS SHALL BE IN ACCORDANCE WITH SNOHOMISH COUNTY STANDARDS AND SPECIFICATIONS AS ADOPTED BY THE CITY OF MILL CREEK.
  2. APPROXIMATE LOCATIONS OF EXISTING UTILITIES HAVE BEEN OBTAINED FROM AVAILABLE RECORDS AND ARE SHOWN FOR CONVENIENCE. THE CONTRACTOR SHALL BE RESPONSIBLE FOR VERIFICATION OF LOCATIONS SHOWN AND FOR DISCOVERY OF POSSIBLE ADDITIONAL UTILITIES NOT SHOWN SO AS TO AVOID DAMAGE OR DISTURBANCE.
  3. IT SHALL BE THE RESPONSIBILITY OF THE GENERAL CONTRACTOR TO OBTAIN ALL REQUIRED PERMITS PRIOR TO ANY CONSTRUCTION. THE GENERAL CONTRACTOR SHALL ARRANGE A PRECONSTRUCTION CONFERENCE WITH THE CITY OF MILL CREEK PUBLIC WORKS DEPARTMENT. IT SHALL BE THE RESPONSIBILITY OF THE GENERAL CONTRACTOR TO CONTACT THE CITY OF MILL CREEK PUBLIC WORKS DEPARTMENT AT LEAST 72 HOURS PRIOR TO ANY REQUIRED INTERMEDIATE INSPECTION.
  4. THE STORM DRAINAGE SYSTEM SHALL BE CONSTRUCTED IN ACCORDANCE WITH THE APPROVED PLANS WHICH ARE ON FILE IN THE PUBLIC WORKS DEPARTMENT. ANY DEVIATION FROM THE APPROVED PLANS WILL REQUIRE WRITTEN APPROVAL FROM THE PUBLIC WORKS DEPARTMENT. A COPY OF THESE APPROVED PLANS MUST BE AVAILABLE ON THE JOB SITE AT ALL TIMES.
  5. COMPACTION OF ALL FILL AREAS SHALL BE PER SNOHOMISH COUNTY SPECIFICATIONS. FILL SHALL BE PROVIDED IN 6-INCH MAXIMUM LIFTS AND SHALL BE COMPACTED TO 95 PERCENT OF ITS MAXIMUM RELATIVE DENSITY AS DETERMINED BY SECTION 2-03.3(14) OF THE WASHINGTON STATE HIGHWAY DEPARTMENT 1976 STANDARD SPECIFICATIONS.
  6. THE CONTRACTOR SHALL PROVIDE AND MAINTAIN TEMPORARY SEDIMENTATION COLLECTION FACILITIES TO INSURE THAT SEDIMENT-LADEN WATER DOES NOT ENTER THE NATURAL DRAINAGE SYSTEM. THE SILTATION CONTROL SYSTEMS DEPICTED ON THE EROSION/SEDIMENTATION CONTROL PLAN ARE SUCH AS TO MEET MINIMUM REQUIREMENTS. AS CONSTRUCTION PROGRESSES AND UNEXPECTED SEASONAL CONDITIONS DICTATE, MORE SILTATION CONTROL FACILITIES MAY BE REQUIRED TO INSURE COMPLETE SILTATION CONTROL OF THE PROPOSED PROJECT. THEREFORE, DURING THE COURSE OF CONSTRUCTION IT SHALL BE THE OBLIGATION AND RESPONSIBILITY OF THE CONTRACTOR TO ADDRESS ANY NEW CONDITIONS THAT MAY BE CREATED BY HIS ACTIVITIES AND TO PROVIDE ADDITIONAL FACILITIES, OVER AND ABOVE MINIMUM REQUIREMENTS, AS MAY BE NEEDED TO PROTECT ADJACENT PROPERTIES. (NOTE: THE TEMPORARY EROSION/SEDIMENTATION CONTROL DEVICES SHALL BE IN OPERATION PRIOR TO ANY CONSTRUCTION.)
  7. ALL DISTURBED SURFACES SHALL BE HYDRO-SEEDED TO CITY OF MILL CREEK STANDARDS UNLESS OTHER EROSION-RESISTANT LANDSCAPING IS IMMEDIATELY PROPOSED. GRASS SEEDING WILL BE DONE USING AN APPROVED TYPE HYDRO-SEEDER OR AS OTHERWISE APPROVED BY THE CITY OF MILL CREEK PUBLIC WORKS DEPARTMENT. THE PERFORMANCE BOND WILL NOT BE RELEASED UNTIL THE GRASS IS ESTABLISHED UNLESS OTHERWISE APPROVED BY THE CITY OF MILL CREEK PUBLIC WORKS DEPARTMENT.
  8. PRIOR APPROVAL MUST BE OBTAINED FROM THE CITY OF MILL CREEK PUBLIC WORKS DEPARTMENT BEFORE ANY STRUCTURES, FILL OR OBSTRUCTIONS, INCLUDING FENCES, ARE LOCATED WITHIN ANY DRAINAGE EASEMENT.
  9. A COPY OF THESE APPROVED PLANS MUST BE AVAILABLE ON THE JOB SITE AT ALL TIMES.
  10. ALL DETENTION PIPE SHALL BE HELICAL CMP, ALUMINUM OR GALVANIZED STEEL; 30-INCH PIPE SHALL BE 16 GAUGE WITH 2-2/3" X 1/2" CORRUGATIONS; 48-INCH PIPE SHALL BE 16-GAUGE WITH 2-2/3" X 1/2" CORRUGATIONS; 60-INCH PIPE SHALL BE 16-GAUGE WITH 3" X 1" CORRUGATIONS.
  11. ALL STORM SEWER PIPE SHALL BE ASTM C-14 CLASS II, NONREINFORCED CONCRETE BELL AND SPIGOT (WITH BELL REMOVED FROM THE INSIDE OF ALL CATCH BASINS). WHERE NOT SPECIFICALLY CALLED OUT AS "CONCRETE PIPE", THE STORM SEWER MAY BE HELICAL CORRUGATED METAL PIPE (14-GAUGE UNLESS NOTED OTHERWISE), ALUMINUM OR STEEL.  
AS AN ALTERNATE TO EITHER CMP OR CONCRETE PIPE, SMOOTH-WALLED POLYETHYLENE OR POLYPROPYLENE MAY BE USED. THIS PIPE AND FITTINGS SHALL BE MANUFACTURED FROM HIGH DENSITY POLYETHYLENE RESIN WHICH SHALL MEET OR EXCEED THE REQUIREMENTS OF TYPE III, CATEGORY 4 OR 5, GRADE P33 OR P34, CLASS C PER ASTM D1238. IN ADDITION, THE PIPE SHALL COMPLY WITH ALL MATERIAL AND STIFFNESS REQUIREMENTS OF AASHTO M294.

**THIS AS - BUILT ONLY INCLUDES THE DETENTION PIPE AND THE SEDIMENTATION POND**



**SECTION Z-Z**  
**DETENTION PIPE BEDDING, BACKFILL, AND DRAINAGE**  
NO SCALE



**DETENTION SYSTEM DETAIL**  
NO SCALE

BY: CK  
REV: 01

REVISIONS  
NO. DATE  
1 12/22/22 REV. PER C.M.V.C.

DESIGNED: JUP  
DRAWN: K. NICKELS  
CHECKED: DATE  
DATE: LAUREY CALVIN  
PROJECT MANAGER:

6 SHEET OF 8  
JOB NUMBER: 88-237

**AS - BUILT**

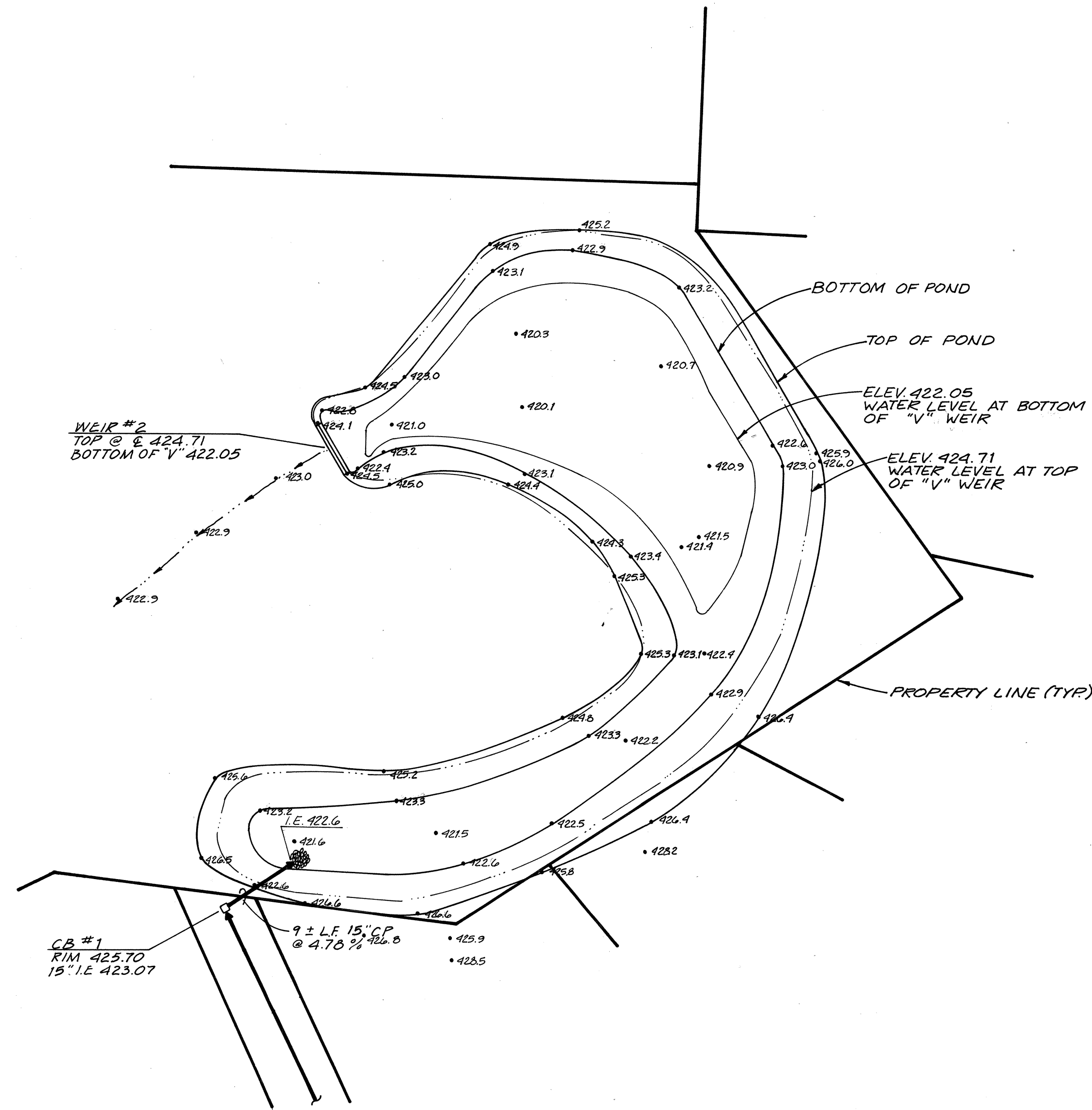
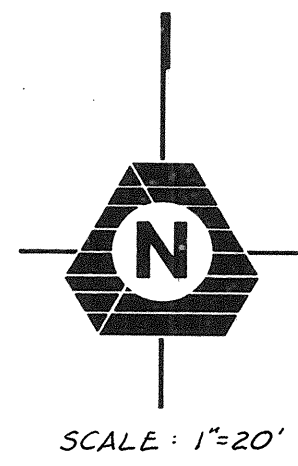
**ROAD & STORM DRAINAGE NOTES & DETAILS**

**HAMLIN PARK**

**WASHINGTON**

**CITY OF MILL CREEK,**





AREA @ ELEV. 424.71 = 8,581 FT<sup>2</sup>  
 AREA @ ELEV. 422.05 = 2,765 FT<sup>2</sup>

VOLUME PROVIDED =  $\left[ \frac{2,765 + 8,581}{2} \right] (424.71 - 422.05)$   
 $= (5,673) (2.66) = 15,090 \text{ FT}^3$

**AS-BUILT**

SEDIMENTATION POND - BASIN "A"  
**HAMLIN PARK**

CITY OF MILL CREEK, WASHINGTON

DESIGNED A. ANDERSON  
 DRAWN M.E.H./C.M.C.  
 CHECKED \_\_\_\_\_  
 DATE \_\_\_\_\_  
 LARRY CALVIN  
 PROJECT MANAGER

SHEET  
**3A OF 3**  
 JOB NUMBER  
**88-237**

NO.	DATE	REVISIONS	BY/CK

**TRIAD ASSOCIATES**  
 Project Management  
 Civil Engineering  
 Land Use Planning  
 Environmental Analysis  
 11415 NE 128th Street • Kirkland, WA 98034 • (206) 821-8448 • (206) 821-3481 FAX